



GV-iView V2.1.3 for iPhone and iPod Touch & GV-iView HD V1.0.3 for iPad

Article ID: GV10-11-03-07-y

Release Date: 01/04/2012

GV-iView function is introduced to support iPhone, iPod Touch and iPad for the mobile surveillance application.

System Requirements

Handheld Device View	
OS Supported	iPhone with iOS 4.3.3 or above iPod Touch with iOS 4.3.3 or above iPad with iOS 4.3.3 or above
System Supported	GV-System version 8.3.2 or above
Port	Data Port: 8866, RPB Port: 5511, HTTP Port: 80; Command Port: 4550 (for PTZ control); Data Port: 5550 (for PTZ control)
Protocol	TCP/IP (JPEG)
Functions	Video streaming, Remote Playback (RPB), PTZ control, output control and etc.
Resolution	QCIF (176 x 144), CIF (320 x 240)

Key Features

- Live video
- Remote Playback (RPB)
- PTZ control
- Output control

Download Link

Click [Here](#) to download the free application GV-iView.



Installing GV-iView

You can install GV-iView program from the above download link or from the Surveillance System Software DVD.

1. Connect your mobile device to the computer.
2. Search **GV-iView** on iTunes Store.



Figure 1

3. Click **Free App** and type your Apple ID and password. The GV-iView starts loading to your mobile device.



Running GV-iView

To allow remote access to GV-System, the following functions must be activated:

1. On the main screen, click the **Network** button, select **WebCam Server**, click the **JPG** tab, and select **Create JPEG/GIF file(s)**.

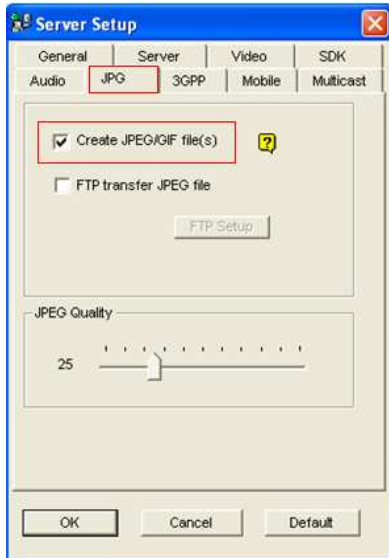


Figure 2

Note: To increase the video quality, you can move the Quality slider to higher value.

2. Click the **Mobile** tab, and activate the settings of communication ports.

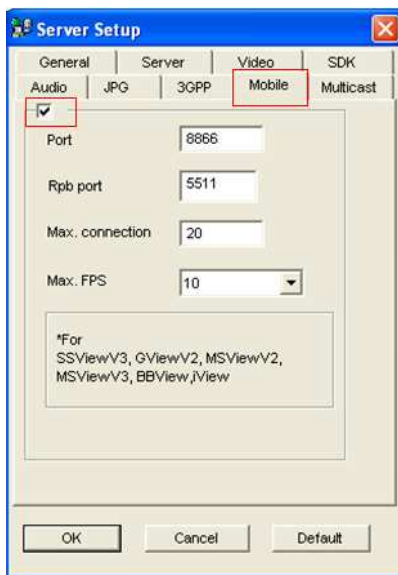


Figure 3



3. Click **OK** to start the WebCam server.

Note: If there is a router or firewall installed, ensure these communication ports required by the WebCam server are open: HTTP Port 80, HTTPS Port 443 (if SSL is enabled), Live View Port 8866 and RPB Port 5511.

4. Activate **GV-iView** on the mobile device.
5. On the login screen, enter the IP address of the GV-System, port value (default value is 8866), ID and Password. Then press **Connect**. Once the connection is established, the live display of 6 cameras will appear.
6. Select ON for HTTPS if SSL is enabled for WebCam Server. If the default SSL port of 443 on the WebCam Server is modified, specify the new port number used for HTTPS connection at the end of the IP address, e.g., webcam.geovision.com.tw:445.

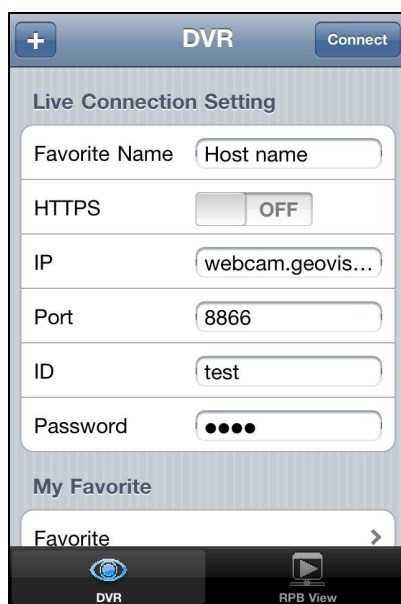


Figure 4

Note: If the default HTTP port of 80 on the WebCam Server is modified, specify the new port number used for HTTP connection at the end of the IP address, e.g., webcam.geovision.com.tw:81.



Playing Back the Recordings

To retrieve the events recorded on the GV-System and play them back:

Note:

1. The remote playback (RPB) function is only supported if the video was recorded with a resolution of CIF or lower.
 2. The remote playback (RPB) function does not support the playback of video files recorded on the GV IP devices.
-


1. On the login screen (Figure 4), press RPB View 
2. Enter the IP address of the GV-System, port value (default value is 5511), ID and Password. You can also search the recordings after a specified date and time by selecting **RPB Time Setting** and entering the date and time. Then press **Connect**.



Figure 5

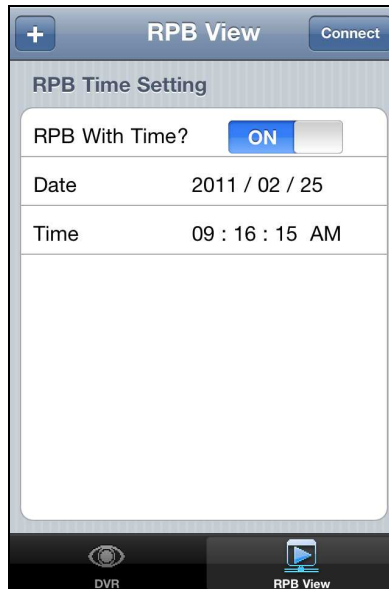


Figure 6



3. Select the desired recordings from the event list for playback. Use the **Change cam** button at the top right corner to switch cameras.

Setting	I/O List	Change cam
<input type="button" value="Prev 10 items"/>	<input type="button" value="NEXT 10 items"/>	
10:10:27	2011/02/25	<input type="button" value="▶"/>
10:07:00	2011/02/25	<input type="button" value="▶"/>
10:03:24	2011/02/25	<input type="button" value="▶"/>
10:02:48	2011/02/25	<input type="button" value="▶"/>
10:00:16	2011/02/25	<input type="button" value="▶"/>
09:55:16	2011/02/25	<input type="button" value="▶"/>
09:54:40	2011/02/25	<input type="button" value="▶"/>
09:51:29	2011/02/25	<input type="button" value="▶"/>
09:49:39	2011/02/25	<input type="button" value="▶"/>

Figure 7



Other Functions

After you enlarge one channel, you can find the following buttons for control.

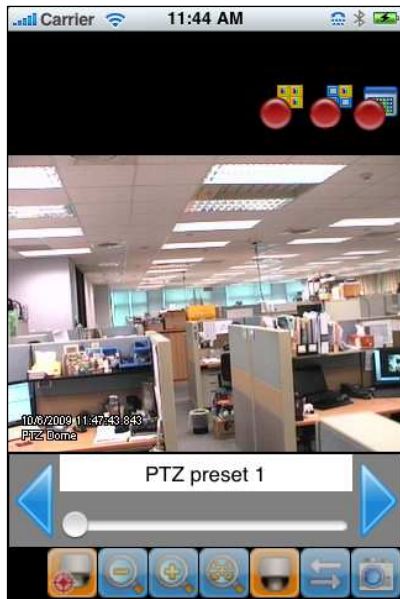


Figure 8

Button	Name	Function
	Enable Record	Activates recording controls.
	Record One Channel	The button is available when you press the Enable Record button. Starts / stops recording the current channel.
	Record All Channels	The button is available when you press the Enable Record button. Starts / stops recording all channels.
	Enable PTZ	Activates PTZ controls. A swipe of a finger to control the camera's direction. Two finger pinch to zoom in and out.
	Focus Far / Focus Near	The two buttons are available when you press the Enable PTZ button. Use the two buttons to focus in or out the image.
	PTZ Preset	The button is available when you press the Enable PTZ button. It allows you to remotely move the PTZ to the preset points.
	Auto Focus	The button is available when you press the Enable PTZ button.
	Enable I/O	Activates the output controls.
	Snapshot	Takes a snapshot of image.



PTZ Speed Control for PTZ Cameras

Click anywhere on the Live View screen of PTZ camera to bring up the PTZ Speed Setting panel. Select your desirable level of PTZ speed. Higher value means higher speed.



Figure 9

Accessing I/O Devices

1. Press the **Enable I/O** button. The screen, similar to the following image, appears.
2. Use the left and right buttons to change the I/O module, and use the scrollbar to change the output device.
3. Press **IO Module 1 (output: 1)** to manually force the output to be activated.



Figure 10



My Favorite

On the login screen (Figure 4) you can find the My Favorite option, allowing you to add several links of GV-System servers for quick connections. Up to 50 links can be created.

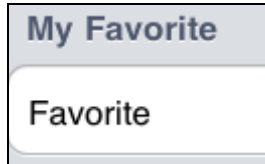


Figure 11