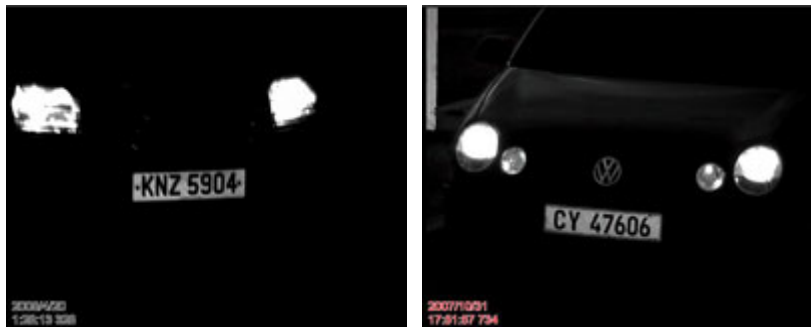


GV-IRCAM10/20 ANPR/LPR camera



INTRODUCTION

GV-IRCAM is a weatherproof 24/7 IR camera specially designed for LPR/ANPR application on reflective license plates. It provides excellent license plate images even in strong sunlight, low sunlight, deep shadow during the daytime and nighttime with or without vehicle headlight on.



KEY FEATURES

- Built-in powerful IR LED illuminator
- Built-in always-on blower
- Weatherproof (IP66 standard)
- Sun-shield

| Specifications | | |
|---------------------------|--|--|
| Models | GV-IRCAM10 | GV-IRCAM20 |
| Distance (optional) | 7~10M / 22.97 ~ 32.80 ft | 15~20M / 49.21 ~ 68.62 ft |
| Sensor | 1/3" B/W Ex-view CCD | |
| Resolution | 600 TVL | |
| Lens Focal Length | 5 ~ 50 mm, 10X | 10 ~ 120 mm, 12X |
| Construction | Robust aluminum with weatherproof sun-shield | |
| Protection classification | IP 66 | |
| Environmental | Operation: -20 °C ~ 50 °C / -4 °F ~ 122 °F Storage: -20°C ~ 70°C / -4 °F ~ 158 °F | |
| Power Supply | DC12V | |
| Power Consumption | 15W | 20W |
| LED Quantity | 12 High efficiency reflex LED | 24 High efficiency reflex LED |
| Illumination Range | 10M / 32.80 ft (object of view reflecting IR Light) | 20M / 68.62 ft (object of view reflecting IR Light) |
| Illumination View Angle | 30° | |
| Illuminator Life | 25,000 hrs | |