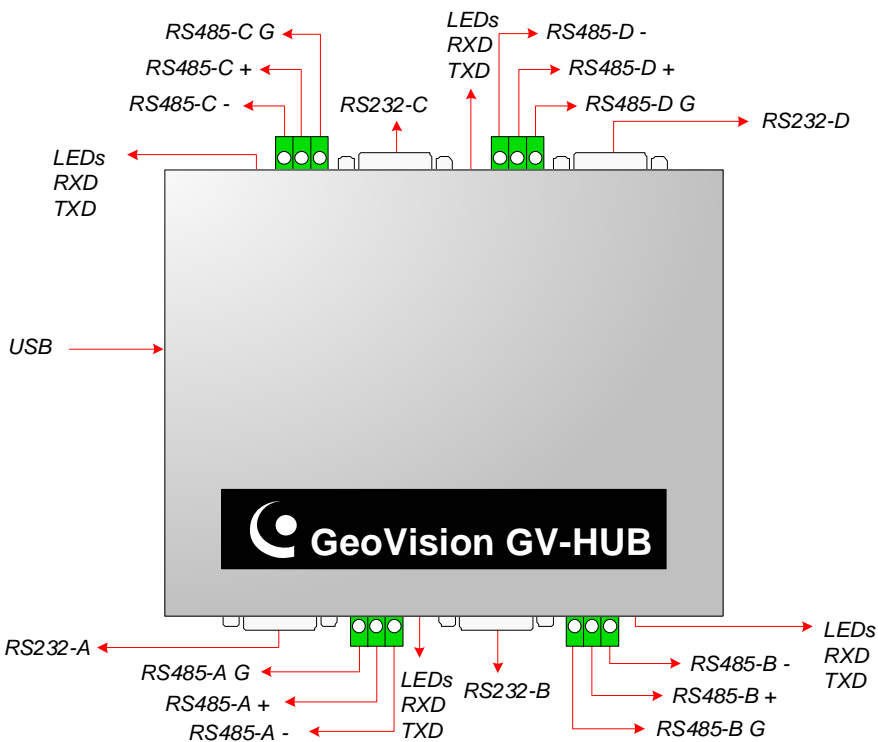


GV-Hub

GV-Hub adds 4 RS-232/485 serial ports through your PC's USB port. The USB solution for serial port extension is perfect for mobile instrumentation and POS applications.

Packing List

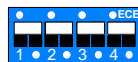
- 1 GV-Hub x 1
- 2 Installation CD x 1
- 3 A to B USB Cable (1.2 meters) x 1
- 4 DB9 RS-232 Cable (1.8 meters) x 4



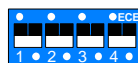
Note: There are four sets of RS-232/485 ports (A-D). In a single set, you can only choose RS-232 or RS-485 port for connection.

DIP Switch: To change the DIP switch settings, you must open the GV-Hub case.

Default Setting



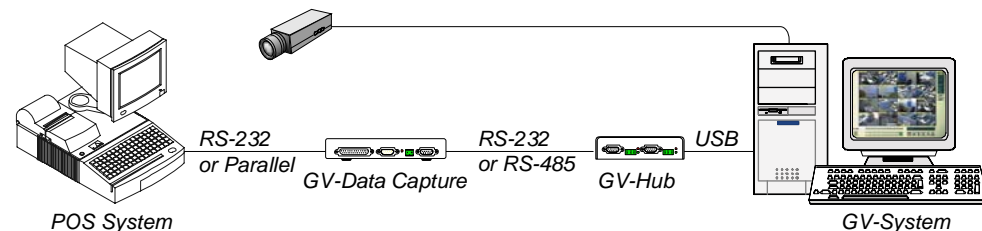
Standard Mode (TX Feedback)



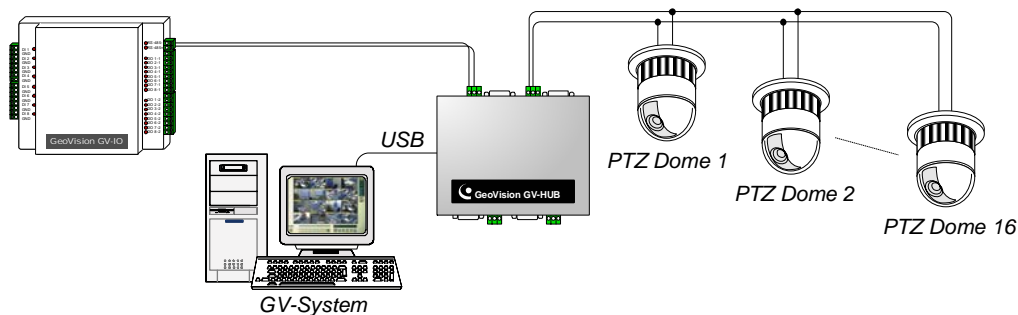
Connecting Output Devices

The following diagrams illustrate how to connect the GV-Hub to the POS system and RS-485 devices.

1. POS system:



2. RS-485 devices:



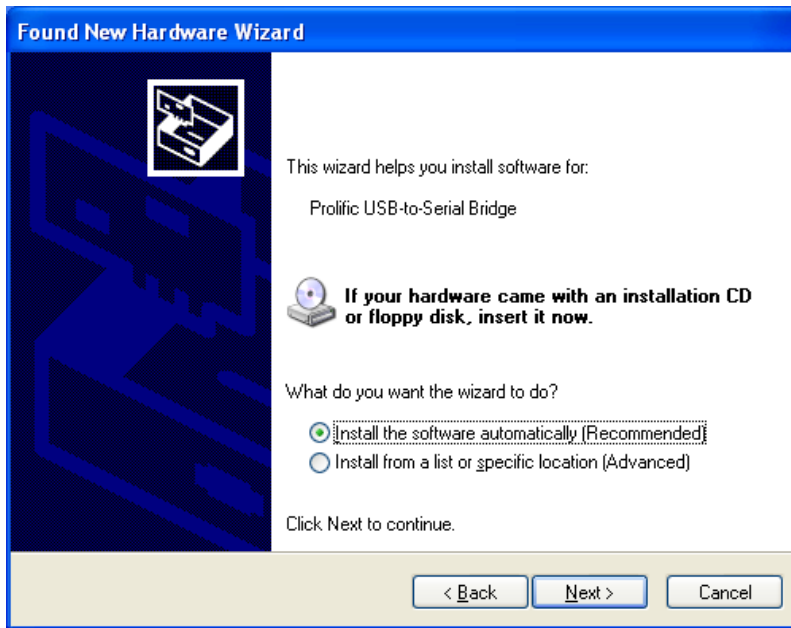
Specifications

Serial Interface	RS-232	Signal: DCD, RxD, TxD, DTR, GND, DSR, RTS, CTS Connector: 4 x DB9 Male (A, B, C, D)
	RS-485	Signal: D+, D-, GND Connector: 4 x Terminal Block (A, B, C, D)
	Serial Line Protection	16 KV ESD for All Signals
USB	Compliance	USB 1.1, 1.0 USB 2.0 Backward Compatible
	Speed	Full Speed 12 Mbps
Communication Parameters	Parity	None, Even, Odd
	Data Bit	7, 8
	Stop Bit	1 (default), 2
	Flow Control	RTS/CTS, XON/XOFF
	Speed	600 bps to 115,200 bps
Environmental Conditions	Operation Temperature	0~55 °C/ 32~131°F
	Humidity	5%~95% (Non-Condensing)
Dimensions	103 (W) x 30 (H) x 125 (D) mm / 4.06 x 1.18 x 4.92 (in)	

Installing GV-Hub Drivers

When you connect GV-Hub to the computer, the Found New Hardware Wizard will automatically detect the device. Once the wizard is open, follow these steps to install the hub drivers.

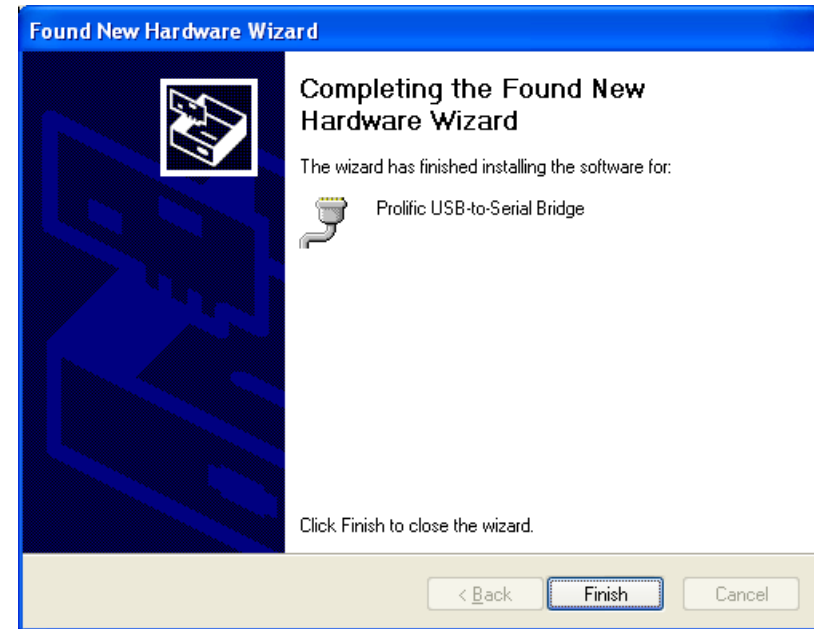
1. Insert the installation CD to your computer.
2. Select **Install the software automatically**, and then click **Next**.



3. When this warning window appears, click **Continue Anyway**.



4. When the installation is completed, click **Finish**.



Note: In Windows 2000, the wizard at step 1 will only pop up once. In Windows XP, the wizard will totally pop up 4 times. Each time follow above steps to install the driver.

To verify the drivers are installed correctly, go to Device Manager. Expanding the Ports field, you should see the 4 entries for **Prolific USB-to Serial Bridge**.

