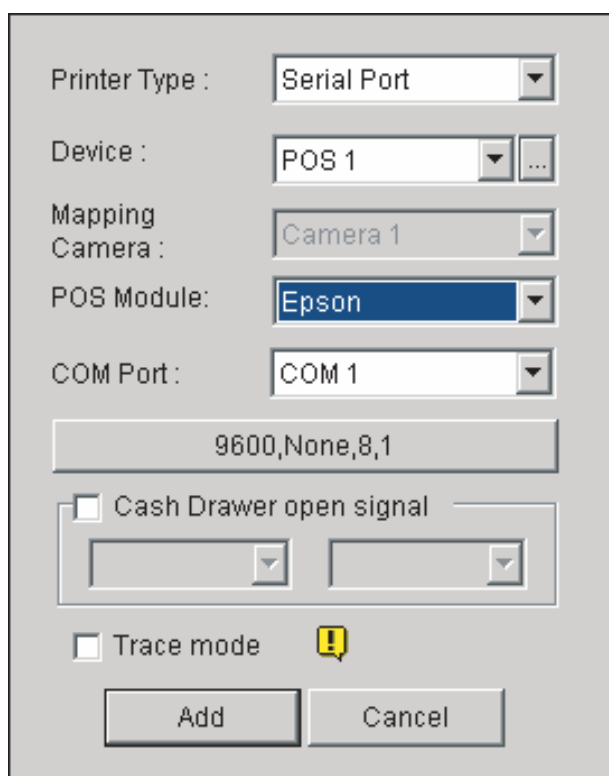


## The displayed transaction item cannot match that entered at the POS system/cash register

1. Run POS Server Setup.  
(Look under GV-System/Configure/POS Application Setting/POS Device Setup)
2. Click the **New** button in the POS Server Setup window.
3. Select **Epson** in the POS Module field.



**Figure 1** Selecting Epson in the POS Module field

4. Click **Add**, and test this setting.

If the above setting doesn't work, send us the following information. We will analyze your case and offer you a possible solution.

- The **txt** file created by HyperTerminal. For more information about HyperTerminal, see the documentation: [The Printing Mode of POS System/Cash Register](#).

