



Access Control with an **Eye**

Expandable Solution



**IP
Camera**



VMS



**Access
Control**



LPR



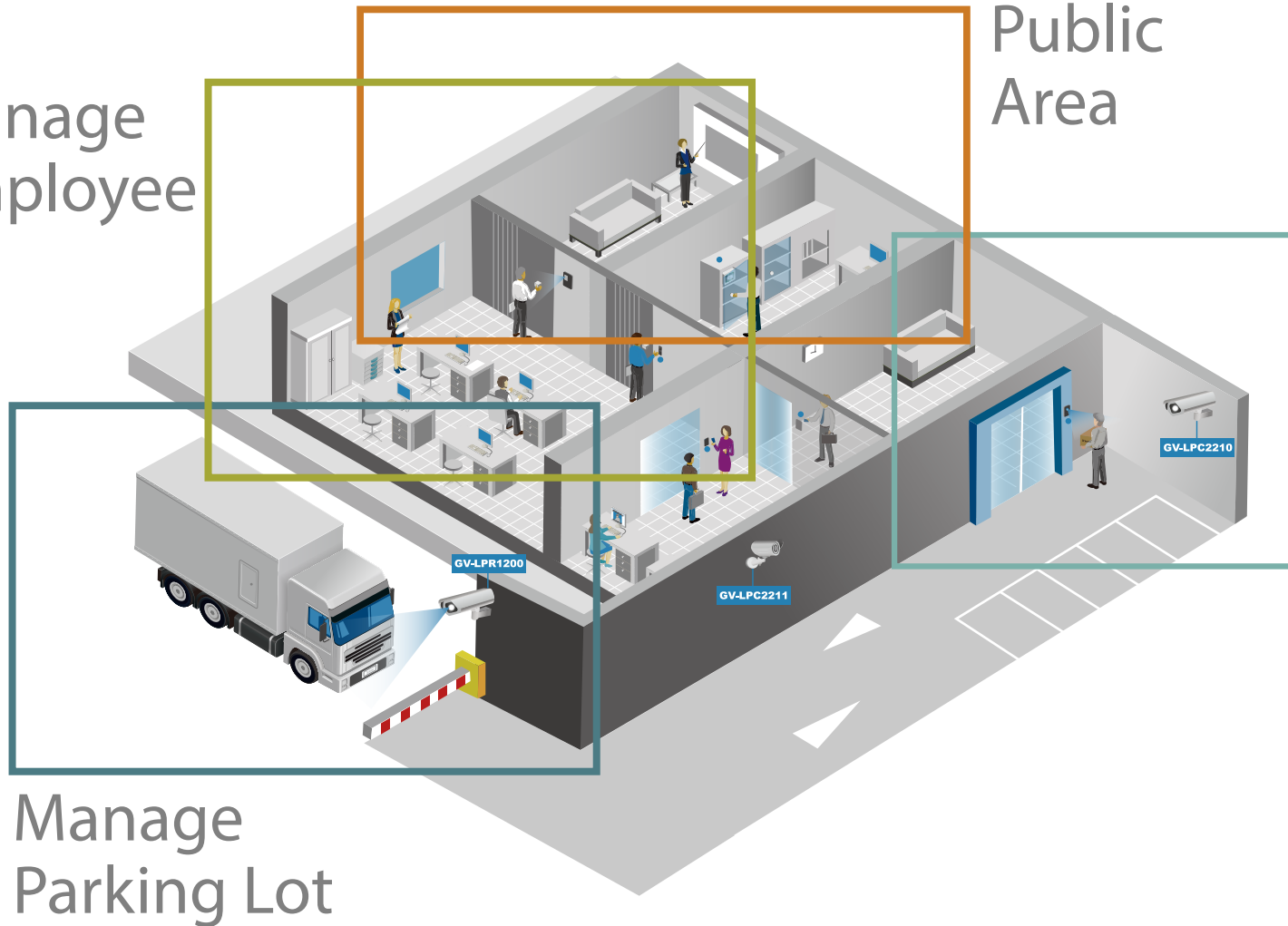
You may not need it now, but you may in the future. Choosing a system that would allow fully integrated security systems, i.e. intrusion, access control, and video.

Application Scenarios

Manage Employee

Public Area

Manage Visitors



Manage Parking Lot



Manage
Employee

- Door Access
- Time & Attendance

Manage
Parking Lot

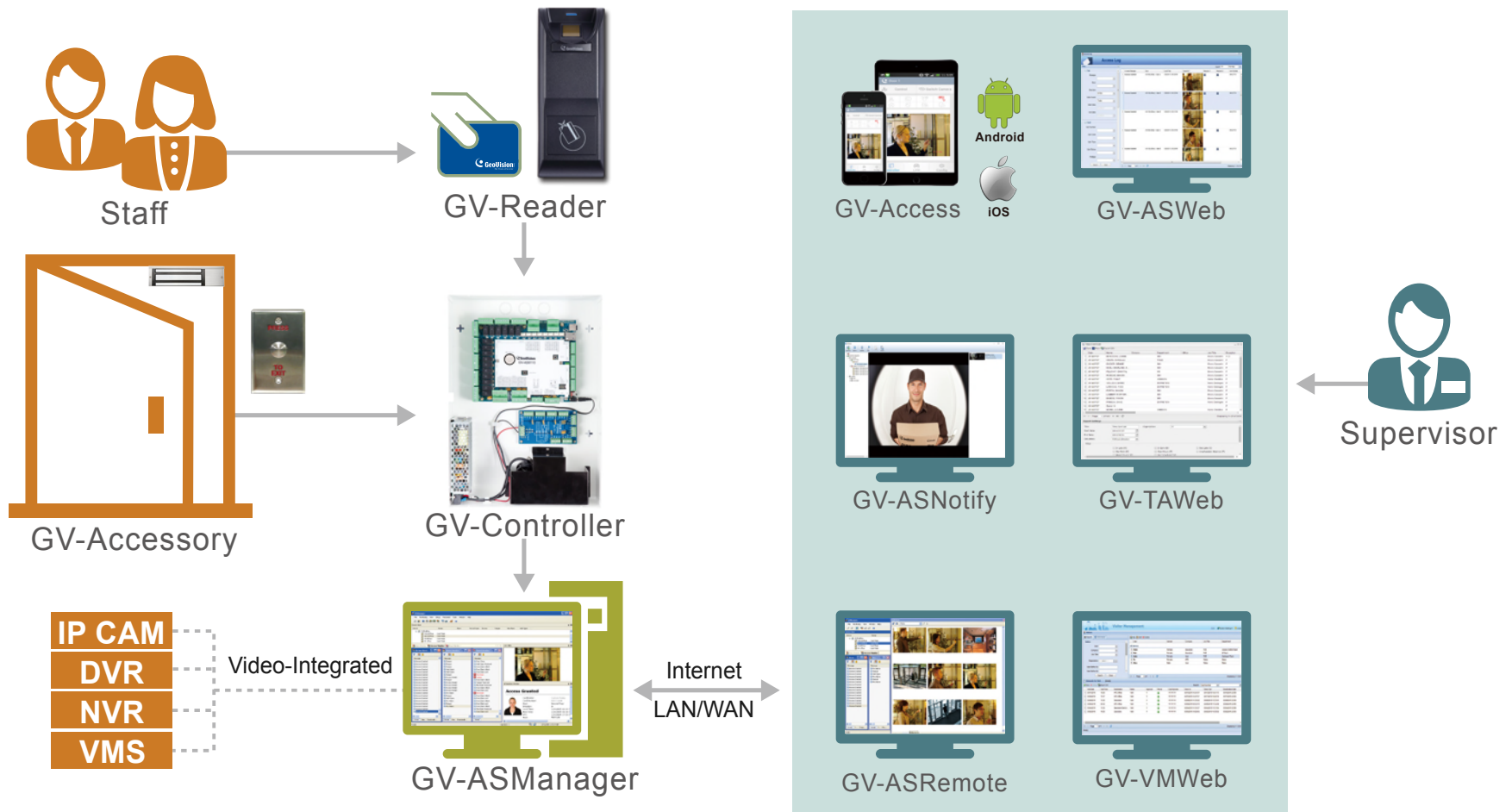


Manage
Visitors

Public
Area

- Elevator
- Patrolling

Structure



Door Access



- GV-AS2120
- GV-AS4110
- GV-AS4111 kit
- GV-AS8110
- GV-AS8111 kit



Remotely add or delete cards, users, controllers, access groups, cameras



Log export in Excel, Text, HTML or Zip file formats



Web interface for historical log search with corresponding video and snapshot



View access data on Google Maps in the order of access time



As if you were there

Remotely watch live view from connected devices

The screenshot shows the 'Monitor' application window. On the left, a tree view under 'Device' shows 'Controller 1' expanded to reveal 'Door 1' through 'Door 4', all with a status of 'Card Mode'. Below this, 'LPR 1' is shown with a status of 'Connecting...'. On the right, the 'Event Log' tab is active, displaying a list of events with columns for Message, Door, Local Time, and Playback options.

Message	Door	Local Time	Playbac...	Playb...
Reset	Controller 1 - Door 1	8/1/2014 2:13...		
Reset	Controller 1 - Door 2	8/1/2014 2:13...		
Door/Gate Unlock	Controller 1 - Door 1	8/1/2014 2:48...		
Force Unlock Rem...	Controller 1 - Door 2	8/1/2014 2:48...		
Door/Gate Unlock	Controller 1 - Door 2	8/1/2014 2:48...		
Door/Gate Lock	Controller 1 - Door 1	8/1/2014 2:48...		
Door/Gate Unlock	Controller 1 - Door 3	8/1/2014 2:48...		
Door/Gate Unlock	Controller 1 - Door 4	8/1/2014 2:48...		
Door/Gate Lock	Controller 1 - Door 3	8/1/2014 2:48...		
Door/Gate Lock	Controller 1 - Door 4	8/1/2014 2:48...		
Disable Remote Do...	Controller 1 - Door 2	8/1/2014 2:49...		
Card Mode	Controller 1 - Door 2	8/1/2014 2:49...		
Door/Gate Lock	Controller 1 - Door 2	8/1/2014 2:49...		

This screenshot shows a continuation of the event log from the previous image. The list of events continues with various lock and unlock actions for different doors, all occurring on 8/1/2014 at 3:48 PM.

Door/Gate Lock	Controller 1 - Door 5	8/1/2014 3:48...		
Card Mode	Controller 1 - Door 5	8/1/2014 3:48...		
Disable Remote Do...	Controller 1 - Door 5	8/1/2014 3:48...		
Door/Gate Lock	Controller 1 - Door 4	8/1/2014 3:48...		
Door/Gate Lock	Controller 1 - Door 3	8/1/2014 3:48...		
Door/Gate Unlock	Controller 1 - Door 4	8/1/2014 3:48...		
Door/Gate Unlock	Controller 1 - Door 2	8/1/2014 3:48...		
Door/Gate Lock	Controller 1 - Door 1	8/1/2014 3:48...		
Door/Gate Lock	Controller 1 - Door 5	8/1/2014 3:48...		

Time & Attendance



• GV-AS1010



Flexible work schedule arrangement



Attendance and payroll report search



Payroll calculation

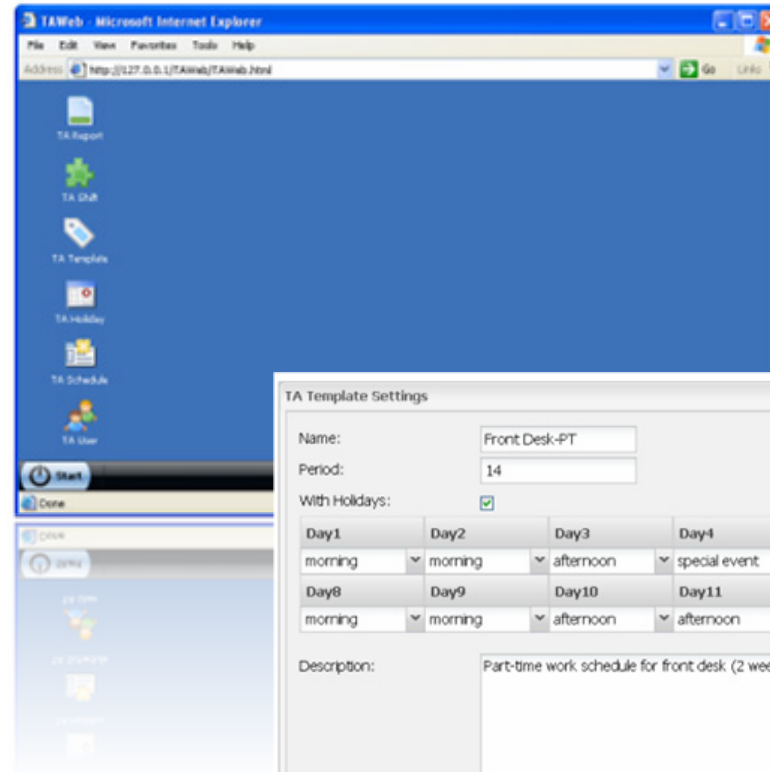


View access data on Google Maps in the order of access time



Integrated with TA System

GeoVision's time and attendance solutions empower employers to accurately and effectively solve a variety of workforce management tasks.



TA Template Settings

Name:

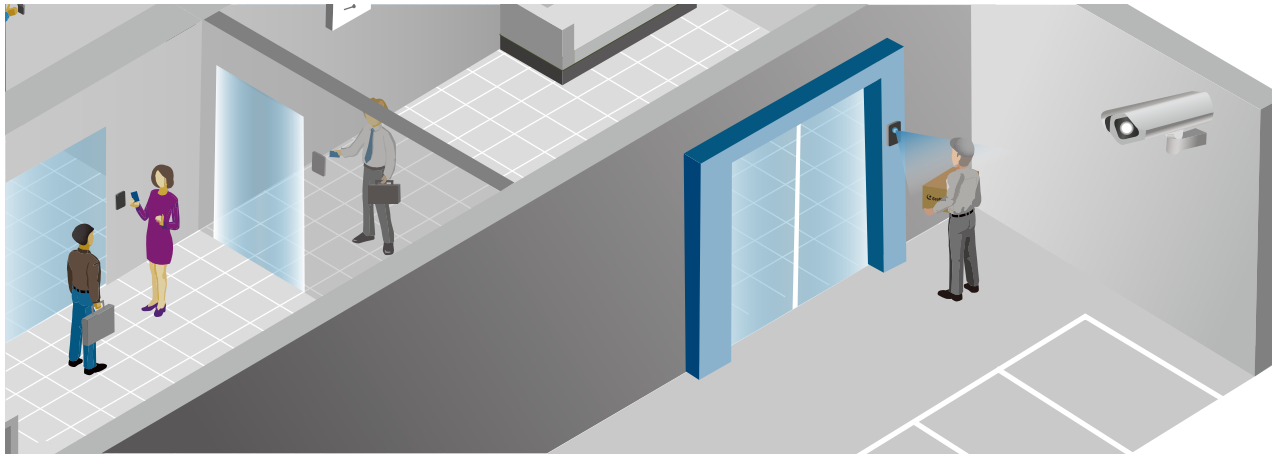
Period:

With Holidays:

Day1	Day2	Day3	Day4	Day5	Day6	Day7
morning	morning	afternoon	special event	special event	special event	-
Day8	Day9	Day10	Day11	Day12	Day13	Day14
morning	morning	afternoon	afternoon	morning	-	-

Description:

Visitor Management



• GV-CS1320



Web interface for creating visitor database & granting access



Visitor self registration

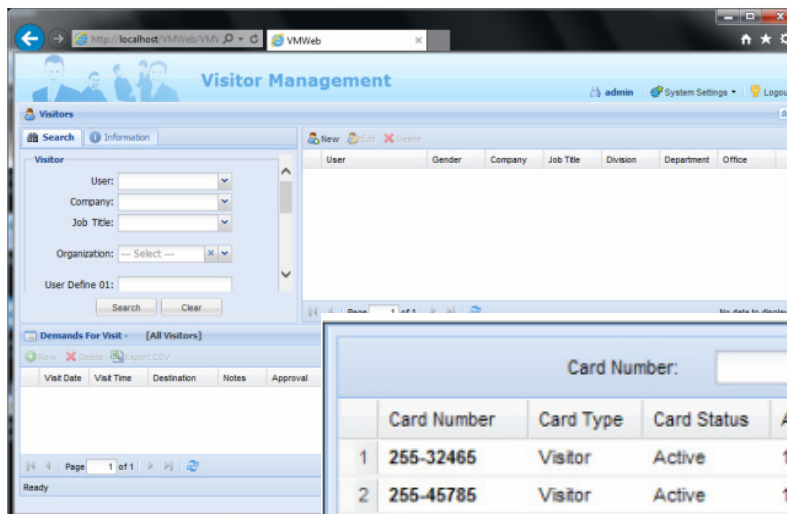


Visitor record search



See your visitors

Enhance your investment in an integrated access control and video surveillance system for simple and effective visitor management.



Card Number:

	Card Number	Card Type	Card Status	Activation Date	Deactivation Date
1	255-32465	Visitor	Active	12/24/2013	-
2	255-45785	Visitor	Active	12/24/2013	12/26/2013 12:0...
3	255-45678	Visitor	Active	12/24/2013	12/27/2013 12:0...

Page 1 of 1 Displaying 1 - 3 of 3

Setting

Deactivation: All Day
Date: 12/24/2013 Time: 23:59

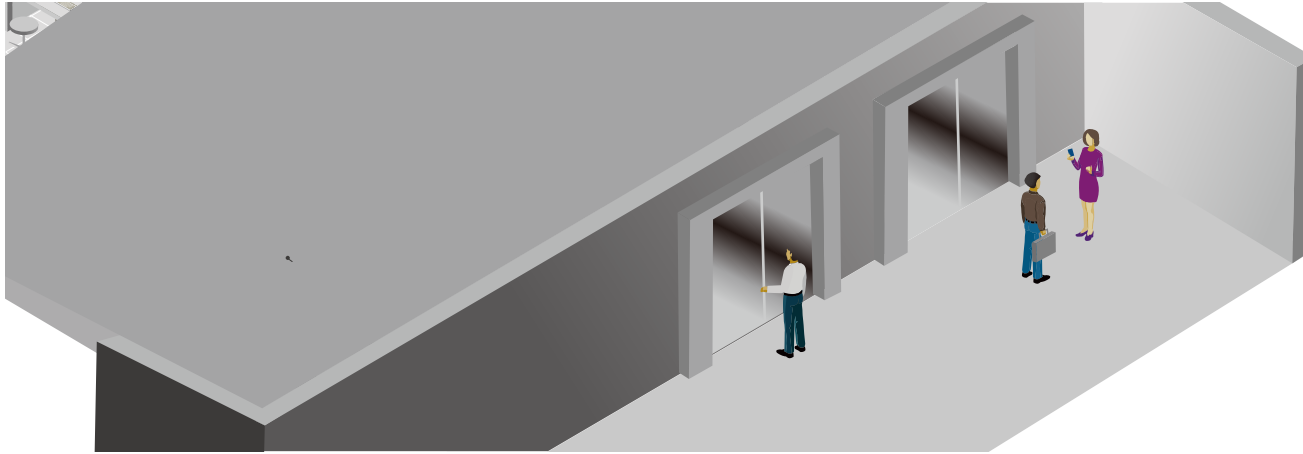
Date: 12/24/2013 Time: 23:59

Description: All Day

Setting

Page 1 of 1 Displaying 1 - 3 of 3

Elevator Floor Control



• GV-EV48



After the specified time expired, the elevator buttons will automatically be locked.

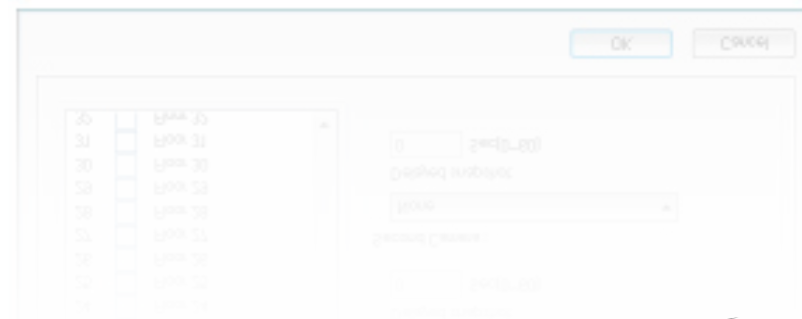
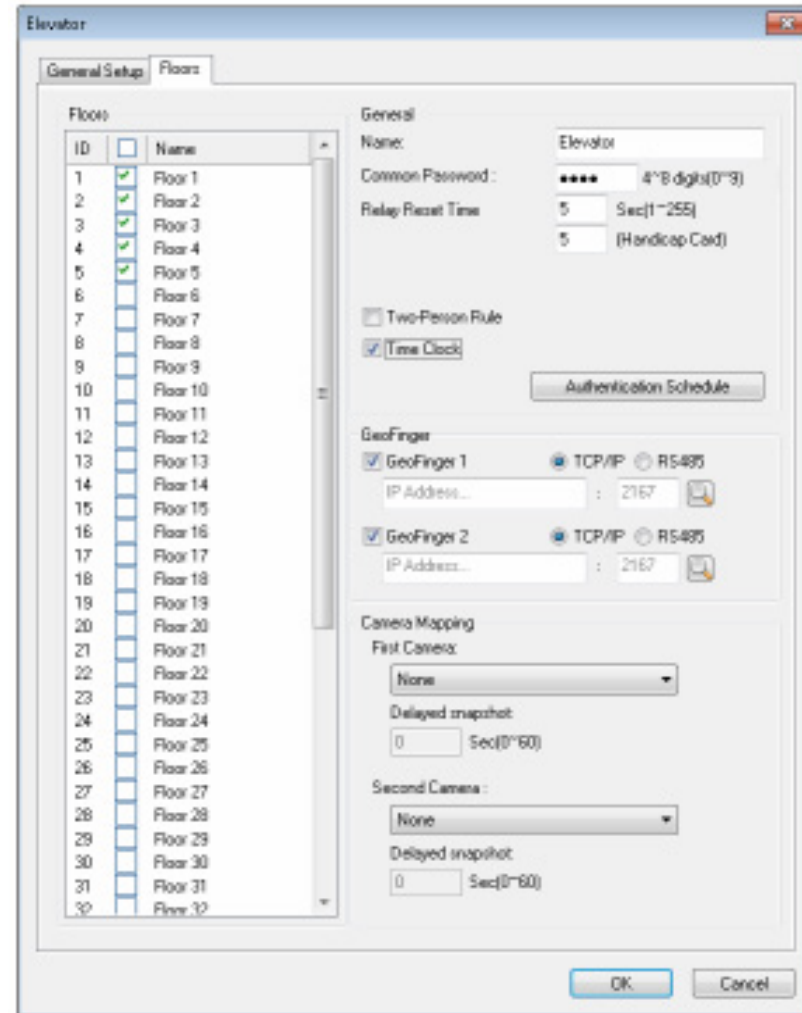


If the elevator access is restricted, type the number of seconds the buttons will remain accessible after card is presented.



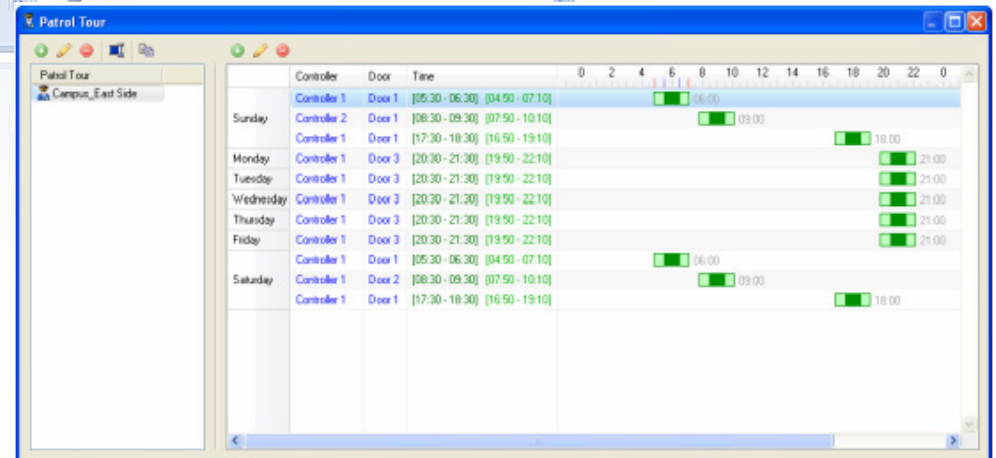
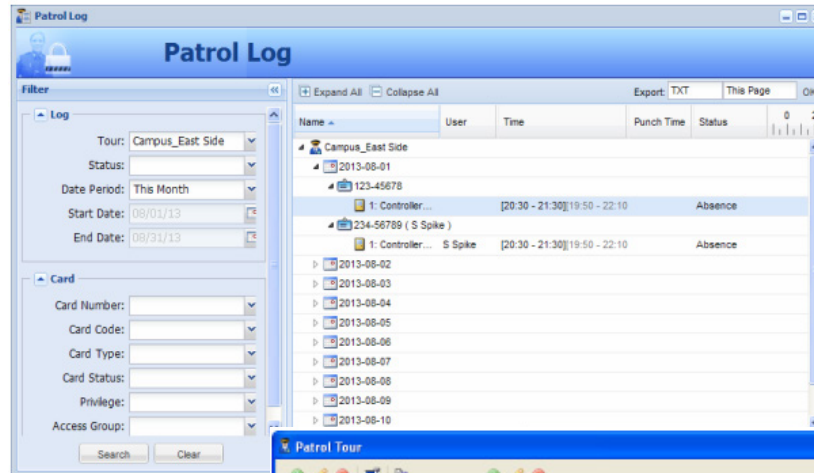
Elevator Floor Control

Next to Handicap Card, type the number of seconds the elevator button will remain accessible when a Handicap Card is swiped

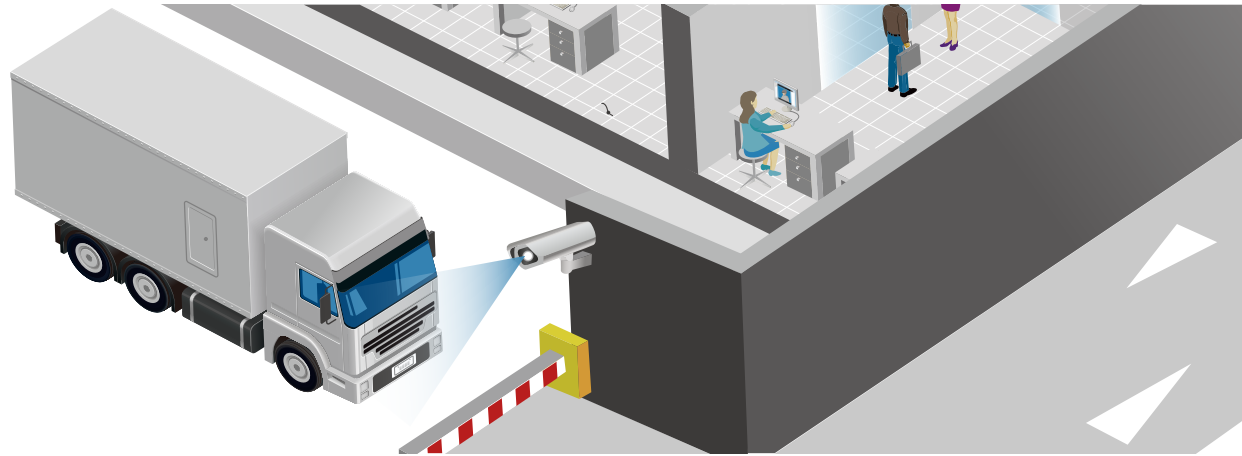


Patrol Tour

The card is assigned to the person in charge of patrolling a location, e.g. a guard.



Parking Lot Management



• GV-LPR1200



The License Plate Recognition functions allow GV-DSP LPR and GV-DVR LPR to grant access when the detected license plate numbers match the vehicle registered in GV-ASManager's database.

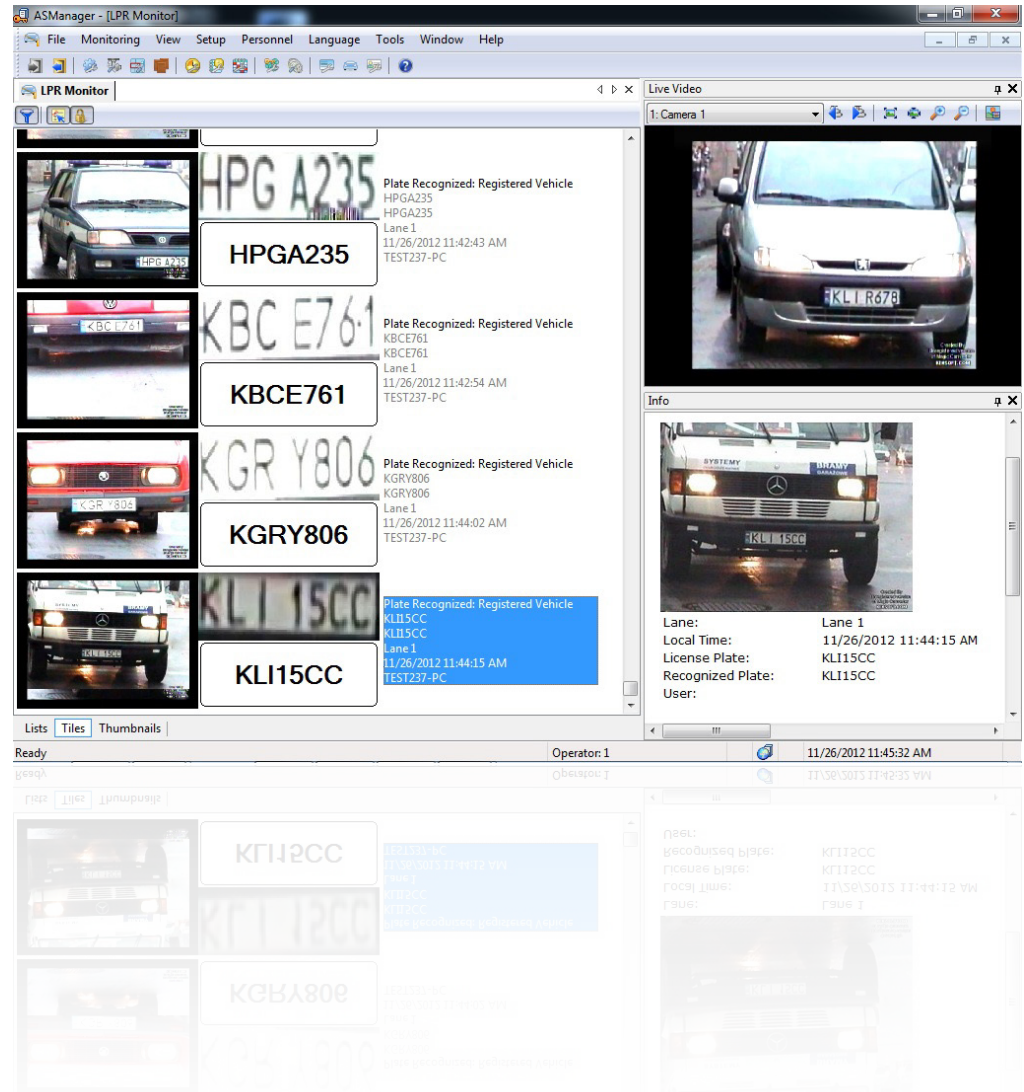


The LPR solution detects and recognizes vehicle license plates upon motion or I/O trigger



Parking Lot Management

GV-ASManager can connect with up to 255 GV-DSP LPR and / or GV-DVR LPR, which can recognize license plates detected in the connected cameras.



Reference Case





Taiwan | GeoVision, Inc.
Headquarter

www.geovision.com.tw
9F, No. 246, Sec. 1, Neihu Rd., Neihu District,
Taipei 114, Taiwan
| T: +886-2-8797-8376 | F: +886-2-8797-5861
| E: sales@geovision.com.tw

USA | California
USA Vision Systems, Inc.

www.usavisionsys.com
9235 Research Drive Irvine, CA 92618, USA
| T: +1-949-583-1519 | F: +1-949-583-1522
| E: sales@usavisionsys.com

USA | New York
USA Vision Systems Inc.
Sales Office

www.usavisionsys.com
333 Westchester Ave. White Plains, NY 10604, USA
| T: +1-845-661-0443 | F: +1-949-583-1552
| E: sales@usavisionsys.com

USA | Indiana
USA Vision Systems Inc.
Sales Office

www.usavisionsys.com
12550 Promise Creek Lane Suite 106 Fishers, IN 46038, USA
| T: +1-949-583-1519 | F: +1-949-583-1522
| E: uvsin@usavisionsys.com

USA | Texas
USA Vision Systems Inc.
Sales Office

www.usavisionsys.com
1555 Valwood Parkway Ste. 150 Carrollton, TX 75006, USA
| T: +1-949-583-1519 | F: +1-949-583-1522
| E: sales@usavisionsys.com

Canada | Quebec
USA Vision Systems Inc.
Sales Office

www.usavisionsys.com
3353 Rue Griffith Saint-Laurent QC H4T 1W5, Canada
| T: +1-514-687-9970 | F: +1-949-583-1522
| E: GVCanada@usavisionsys.com

Europe | Czech
Europe Vision Systems s.r.o.

www.geovision.eu
Pod vinicí 2028/20 143 01 Praha 4, Česká Republika
| T: +420-225-371-121 | F: +420-225-371-131
| E: sales@geovision.eu

Europe | France
French Office

www.geovision.com.tw/FR/index.asp
2 Allée Ernest NOUEL 41100 VENDÔME
| T: +33-2-5480-1692 | E: sales@geovision.eu

Brazil
GeoVision do Brazil

www.geovision.eu
Av. Brigadeiro Luis Antônio, 2729 Sl. 910 Jardins,
São Paulo, SP, Brasil Cep:01401-000
| T: +55-11-24767919 Ext:101
| F: +55-11-24767918

Japan
GeoVision Japan Inc.

www.geovision.co.jp
Tomiokabashi Bldg. 5F, 2-6-11 Fukagawa Koto-ku,
Tokyo 135-0033 Japan
| T: +81-3-5639-9355 | F: +81-3-5639-9356
| E: sales@geovision.co.jp

China
GeoVision Technology (Shanghai) Co., Ltd

www.geovision.com.cn
Room 504, 5/F, NO.700 East Yanan Rd.
Shanghai 200001, China
| T: +86-21-6217-3366 | F: +86-21-6217-0023
| E: sales@geovision.com.cn

